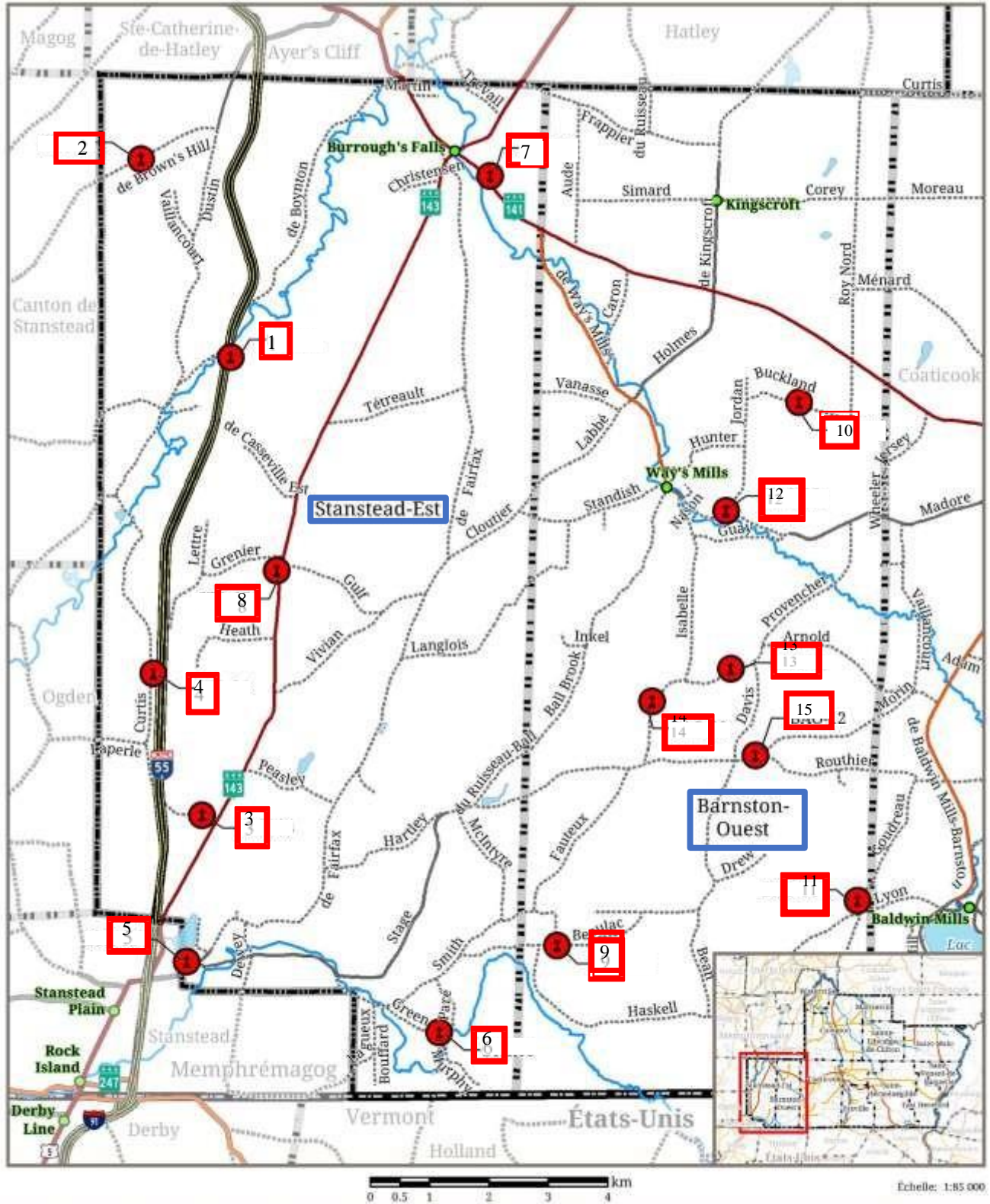


**CIRCUIT: STANSTEAD-EST (STA) - BARNSTON-OUEST (BAO)**  
(≈90km)



**MRC Coaticook**  
Cimetières  
Stanstead-Est / Barnston-Ouest

**LEGENDE**

|                                |                          |                      |
|--------------------------------|--------------------------|----------------------|
| <b>Limites administratives</b> | <b>Transport</b>         | <b>Hydrographie</b>  |
| — Municipalité                 | — Autoroute              | — Rivière importante |
| — MRC                          | — Route principale       | — Plan d'eau         |
| — États-Unis                   | — Route collective pavée | <b>Patrimoine</b>    |
| ● Villes, villages ou hameaux  | — Route locale pavée     | ● Cimetière          |
|                                | — Route locale non pavée |                      |

N  
 Date: 2017-06-05  
 Projection: NAD83 MTM 7  
 Sources: BDTQ, Chantal Lefebvre / Patri-Arch  
 Réalisation: Martin Mimeault, géomaticien

|    |     |                              |                         |            |             |
|----|-----|------------------------------|-------------------------|------------|-------------|
| 1  | STA | Boynton Cemetery             | Chemin Boynton          | 45.118196° | -72.069476° |
| 2  | STA | Brown's Hill Cemetery        | Ch. de la Colline Brown | 45.148127° | -72.089667° |
| 3  | STA | Maple Hill Cemetery          | Chemin Curtis           | 45.048684° | -72.073979° |
| 4  | STA | Moulton Cemetery             | Chemin Curtis           | 45.070062° | -72.084843° |
| 5  | STA | Crystal Lake Cemetery        | Chemin Fairfax          | 45.026787° | -72.073730° |
| 6  | STA | Caswellboro Cemetery         | Chemin Paré             | 45.016466° | -72.022184° |
| 7  | STA | Cimetière Saint-Barthélémy   | Route 141               | 45.146309° | -72.015235° |
| 8  | STA | Cassville Cemetery           | Route 143               | 45.085987° | -72.058875° |
| 9  | BAO | New Boston Cemetery          | Chemin Beaulac          | 45.029867° | -71.997077° |
| 10 | BAO | Buckland Cemetery            | Chemin Buckland         | 45.113018° | -71.947838° |
| 11 | BAO | Chamberlin-Washburn Cemetery | Chemin Goudreau         | 45.037890° | -71.933471° |
| 12 | BAO | Way's Mills Cemetery         | Chemin Jordan           | 45.096408° | -71.963058° |
| 13 | BAO | Blanchard Cemetery           | Chemin Provencher       | 45.071964° | -71.961270° |
| 14 | BAO | Burbank Cemetery             | Chemin Provencher       | 45.067326° | -71.977897° |
| 15 | BAO | Heathton Cemetery            | Chemin Stage            | 45.059343° | -71.955692° |